

# Employee Advisory Council

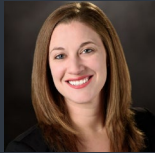
The University of Texas  
System

2021-2022 Officers



Peter-James Ehimika, Chair  
UT Rio Grande Valley

[peterjames.ehimika@utrgv.edu](mailto:peterjames.ehimika@utrgv.edu)



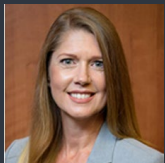
Brittany Kruse, Vice-Chair  
UT MD Anderson

[bccampbell@mdanderson.org](mailto:bccampbell@mdanderson.org)



Trudy Jacobs, Secretary  
UTHealth Houston

[Trudy.Jacobs@uth.tmc.edu](mailto:Trudy.Jacobs@uth.tmc.edu)



Tilly Clark, Historian  
UTMB

[taclark@utmb.edu](mailto:taclark@utmb.edu)

Executive Sponsor:

Julie Goonewardene, Senior  
Advisor to the Chancellor, Chief  
Talent and Innovation Officer

UTS EAC Website:

[www.utsystem.edu/sites/  
employee-advisorycouncil](http://www.utsystem.edu/sites/employee-advisorycouncil)



THE UNIVERSITY of TEXAS SYSTEM  
THIRTEEN INSTITUTIONS. UNLIMITED POSSIBILITIES.

## One System, One Voice

Meeting Summary for April 13-14, 2022  
Hosted by UT Rio Grande Valley

### Meeting Summary:

**This was the first in-person meeting in TWO years! It was nice to connect and work together and not through a screen.**

#### Speaker from UT RGV, provided facts and data on the institution

- Growing in the region, up to just over 1.4 million population now.
- Enrollment grew, even during the pandemic. Likely due to people being back home and joining classes here vs. their home campus.
- Tuition is more affordable at this institution vs. some of the other UT institutions. Allowing for many first-generation students to attend university. They are #2 in the nation for lowest student debt.
- Luminary scholarship is a program to offer the brightest incoming freshman an opportunity to attend school completely paid for as long as they commit to working in the Rio Grande Valley.

#### Representative from HR at UT RGV lead DISC training to get a better understanding of communication and how to communicate with others based on our styles.

- DISC is a universal language, an observable language, a neutral language, and a silent language.
- It is not a measure of someone's intelligence, an indicator of a person's values or motivators, a measurement of skills, expertise, education or training. It is a not an assessment of your personality.
- There are NO wrong styles of communicating.
- Key to self-management is emotional intelligence.
  - Understand your own feelings and the feelings of others.
  - Emotional intelligence includes:
    - Self-Awareness
    - Self-Management
    - Social Awareness
    - Social Skills
- People are unique. It helps us to be more successful to understand others and ourselves.

#### Elections for FY23

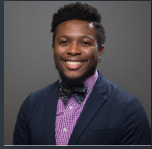
- Chair – Tilly Clark, UTMB
- Vice Chair – Rebekah Sepulveda, UT RGV
- Secretary – Laura Rademacher, UTHealth Houston
- Historian – Shanese Williams, UT Tyler



# Employee Advisory Council

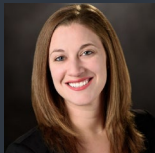
The University of Texas  
System

2021-2022 Officers



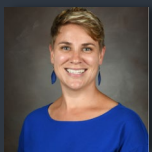
Peter-James Ehimika, Chair  
UT Rio Grande Valley

[peterjames.ehimika@utrgv.edu](mailto:peterjames.ehimika@utrgv.edu)



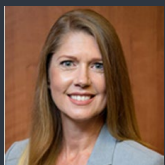
Brittany Kruse, Vice-Chair  
UT MD Anderson

[bccampbell@mdanderson.org](mailto:bccampbell@mdanderson.org)



Trudy Jacobs, Secretary  
UTHealth-Houston

[Trudy.Jacobs@uth.tmc.edu](mailto:Trudy.Jacobs@uth.tmc.edu)



Tilly Clark, Historian  
UTMB

[taclark@utmb.edu](mailto:taclark@utmb.edu)

Executive Sponsor:

Julie Goonewardene, Senior  
Advisor to the Chancellor, Chief  
Talent and Innovation Officer

UTS EAC Website:

[www.utsystem.edu/sites/  
employee-advisorycouncil](http://www.utsystem.edu/sites/employee-advisorycouncil)

## Pictures from our visit



### On the Horizon:

- Determine how EAC looks moving forward
- Next meeting September 7-9, 2022